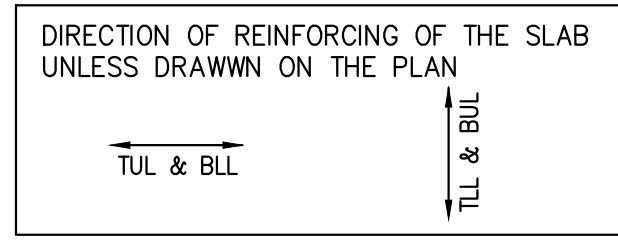


8TH FLOOR FRAMING PLAN

SCALE 1 : 100

- TOP OF SLAB IS AT ELEVATION AS SHOWN ON ARCH. DRAWINGS EXCEPT AS CROSSED AND NOTED ON PLAN.
  - CONCRETE STRENGTH AT 28 DAYS SHALL BE:  
FOR WALLS AND COLUMNS ..... SEE SCHEDULE  
FOR EXT. SLABS ..... 35 MPa  
FOR INTERIOR SLABS ..... 25 MPa  
FOR BEAMS ..... 35 MPa  
CONCRETE EXPOSED TO ELEMENTS SHALL BE 35 MPa WITH 6% TO 8% ENTRAINED AIR.
  - FLOOR SLABS ARE DESIGNED FOR FOLLOWING LOADING CONDITIONS :
- |                     | S.L.D.   | L.L.     |
|---------------------|----------|----------|
| STAIRS & BALCONIES  | 0.50 KPa | 4.80 KPa |
| LOOKERS & STORAGE * | 1.30 KPa | 4.80 KPa |
| RESIDENTIAL         | 1.3 KPa  | 1.9 KPa  |
| TOILETS             | 1.30 KPa | 2.40 KPa |
| TERRACES            | 5.0 KPa  | 4.80 KPa |
- \*
- MINIMUM YIELD STRESS FOR REINFORCING STEEL SHALL BE 400 MPa.
  - TEMPERATURE REINFORCING FOR : 200 SLAB IS 108250, 210 SLAB IS 108230.
  - NO OPENINGS LARGER THAN 300mm x 300mm ARE ALLOWED IN SLAB OTHER THAN THOSE SHOWN ON DRAWINGS.
  - SEE TYPICAL DETAILS ON DRAWINGS S-001 TO S-006.
  - SEE GENERAL NOTES ON DRAWING S-001.
  - REFER TO ARCH. DRAWINGS FOR SLOPES OF SLAB.
  - FOR COLUMN & WALL SCHEDULE SEE DRAWINGS S-301 TO S-306.
  - COORDINATE BEAM DEPTH AT DOOR OPENINGS WITH ARCH. DRAWINGS.
  - EXTEND TEMP. REINF. TO END OF BALCONIES/OVERHANGS.
  - TOP BARS TERMINATING AT EDGE OF SLAB TO HAVE 180° HOOK.

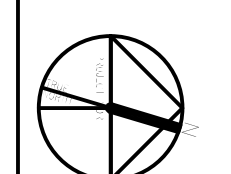


Jablonsky, Ast and Partners  
CONSULTING ENGINEERS  
1125 LESLIE STREET  
DON MILLS, ON, M3C 2G5  
TEL: 416-447-7405  
FAX: 416-447-2771  
E-mail: jag@astint.ca



FIRST FLOOR ELEV. 93.60m

no.	Issued / Revised	date
1	ISSUED FOR PERMIT	2014-06-30
2	REV. ISSUED FOR PERMIT	2014-07-10
3	ISSUED FOR FORMING TENDER	2014-08-27
4	CONSTRUCTION REVIEW	2014-10-01
5	REV. ISSUED FOR PERMIT	2015-01-27
6	ISSUED FOR CONSTRUCTION	2015-05-16
7	UNAPPROVED - JFC	2015-06-26
8	UNAPPROVED - JFC	2015-08-21
9	ISSUED FOR S.D.	2015-07-28



ALEXANDRA PARK - BLOCK 11  
TORONTO, ONTARIO

project no: 13015  
scale: 1:100  
drawn by: H.W.  
reviewed by: J.P.  
date started: MARCH 2014

8TH FLOOR  
FRAMING PLAN

S-110  
2015-07-28